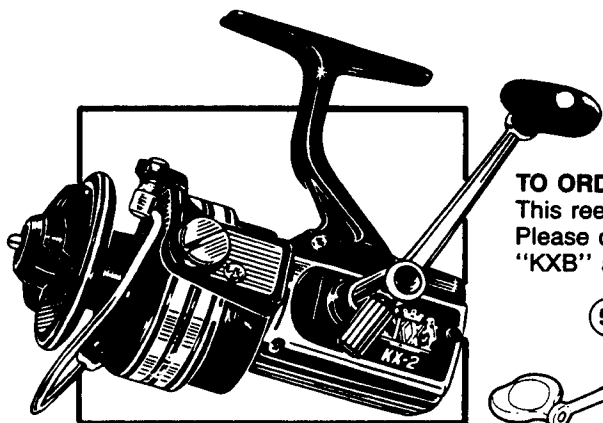


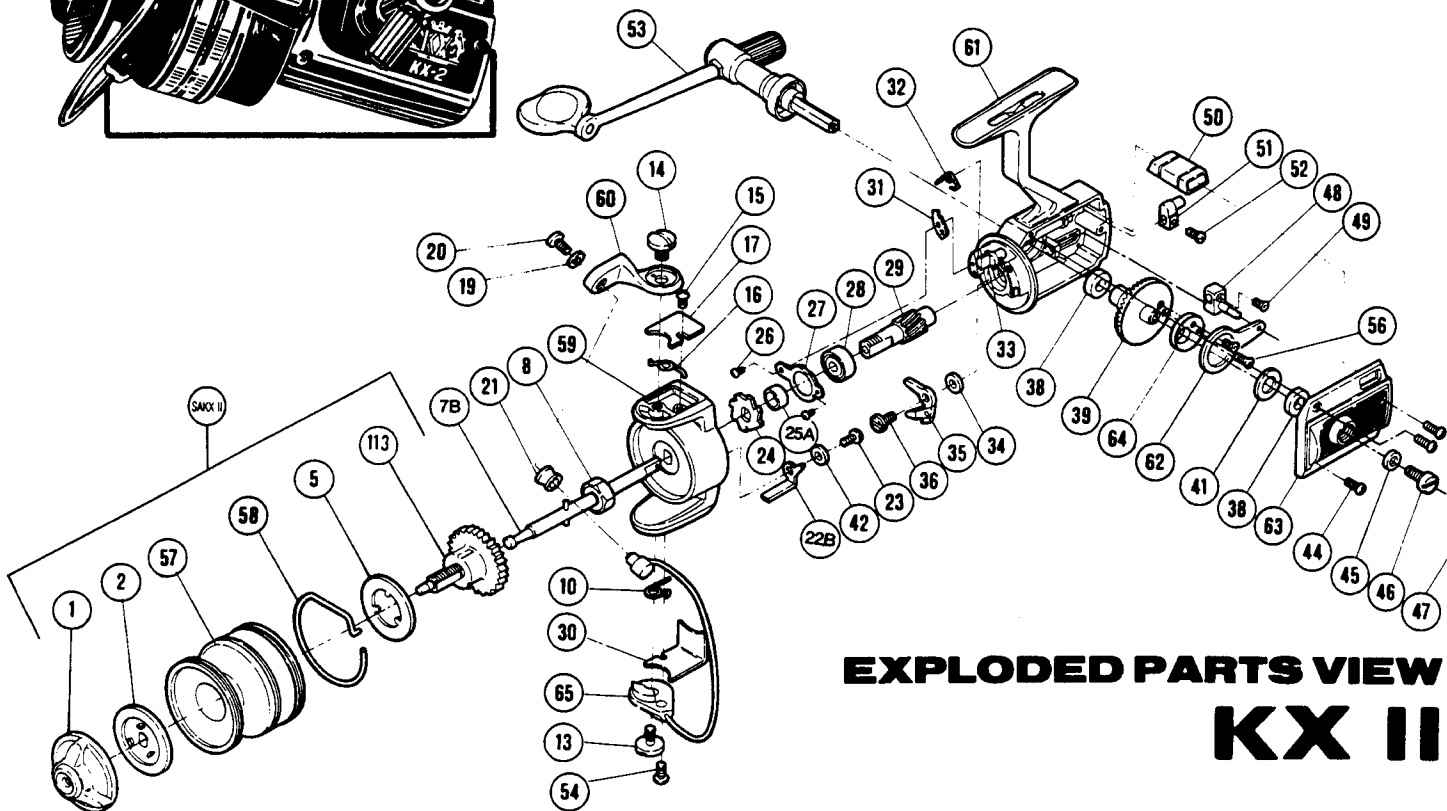
SHIMANO

1987 REPAIR MANUAL KX II

Shimano American Corporation, One Shimano Dr.
Irvine, CA 92718



TO ORDER:
This reel belongs to the "KX, Bass-1" series.
Please order parts using the abbreviation
"KXB" and the part number.



EXPLODED PARTS VIEW KX II

PARTS LIST

PART # DESCRIPTION

- 1 Drag Adjusting Knob
- 2 Drag Disk
- 5 Base Drag Washer
- 7B Spool Axle
- 8 Rotor Nut
- 10 Trip Lever Spring
- 13 Bail Wire Screw
- 14 Bail Mount Screw
- 15 Bail Spring Cover Screw
- 16 Bail Spring
- 17 Bail Spring Cover
- 19 Line Guide Lock Washer
- 20 Line Guide Screw
- 21 Roller Line Guide
- 22B Trip Lever
- 23 Trip Lever Screw
- 24 Anti Reverse Ratchet
- 25A Anti Reverse Spacer
- 26 Bearing Lock Screw

PART # DESCRIPTION

- 27 Bearing Lock
- 28 Ball Bearing
- 29 Pinion Gear
- 30 Trip Lever Cover
- 31 Trip Cam
- 32 Anti Reverse Shaft Spring
- 33 Anti Reverse Shaft
- 34 Anti Reverse Dog Spacer
- 35 Anti Reverse Dog
- 36 Anti Reverse Dog Screw
- 38 Drive Gear Bushing
- 39 Drive Gear
- 41 Thrust Washer
- 42 Trip Lever Spacer
- 44 Side Plate Screw
- 45 Handle Screw Lock Washer
- 46 Handle Retainer Screw

PART # DESCRIPTION

- 47 Dust Cap
- 48 Oscillation Block
- 49 Oscillation Block Screw
- 50 Anti Reverse Switch
- 51 Anti Reverse Actuator
- 52 Actuator Screw
- 53 Handle
- 54 Trip Lever Cover Screw
- 56 Oscillation Disk Screw
- 57 Spool Shell
- 58 Click Spring
- 59 Rotor
- 60 Bail Mount
- 61 Housing
- 62 Oscillation Guide
- 63 Side Plate
- 64 Oscillation Disk
- 65 Bail Wire
- 113 Spool Spindle